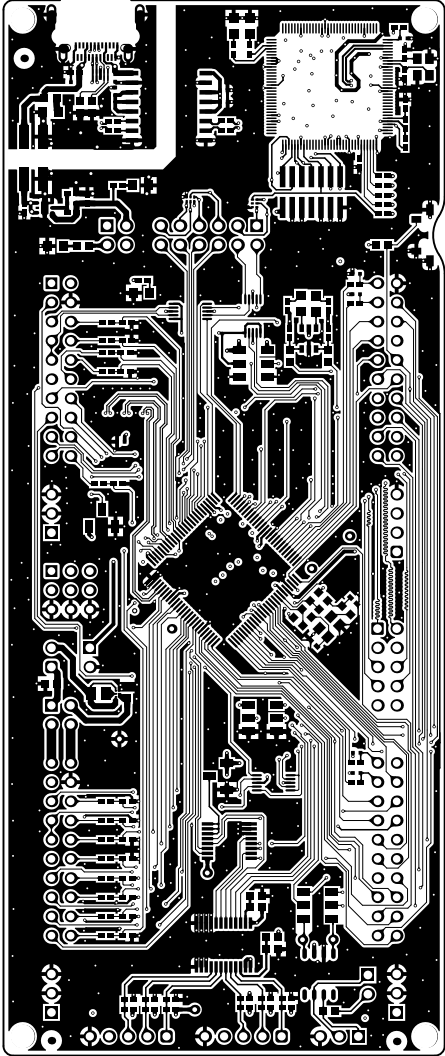
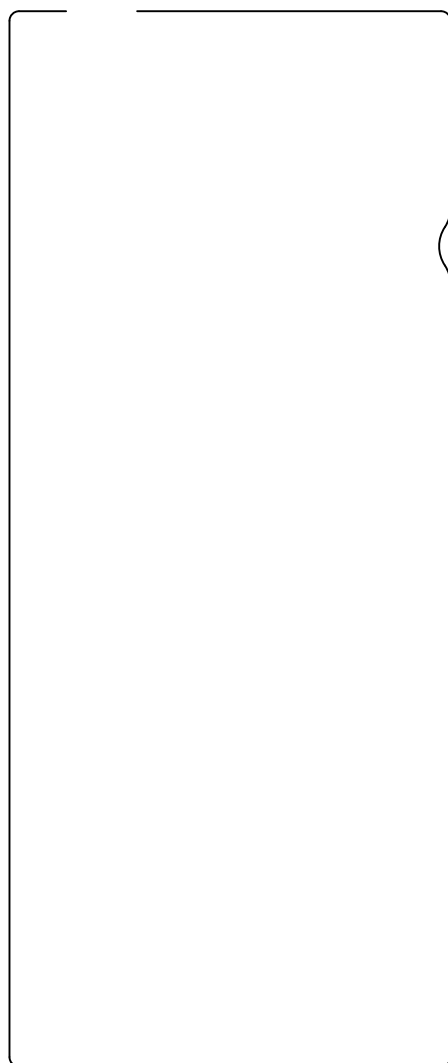
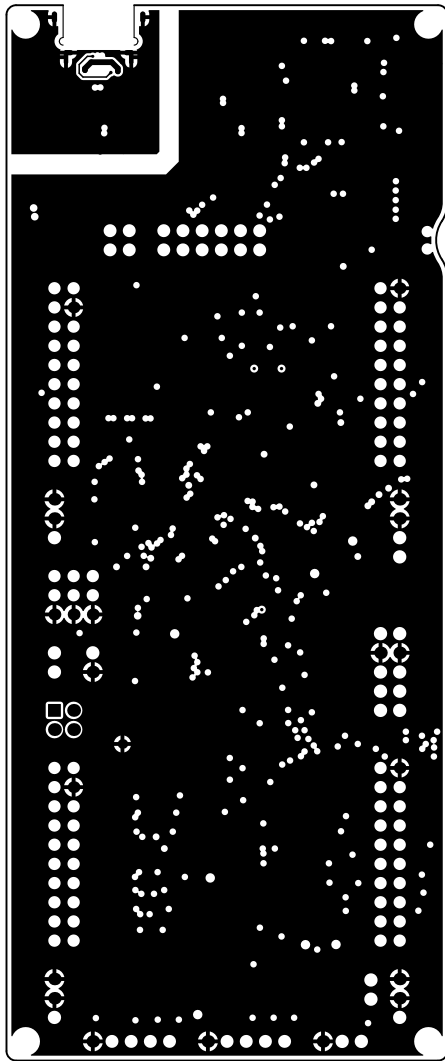


Top Solder

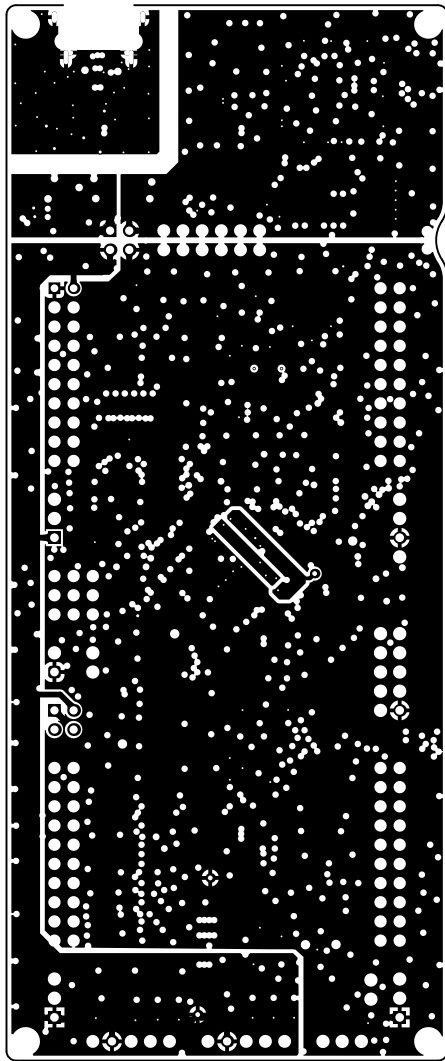


Top Signal

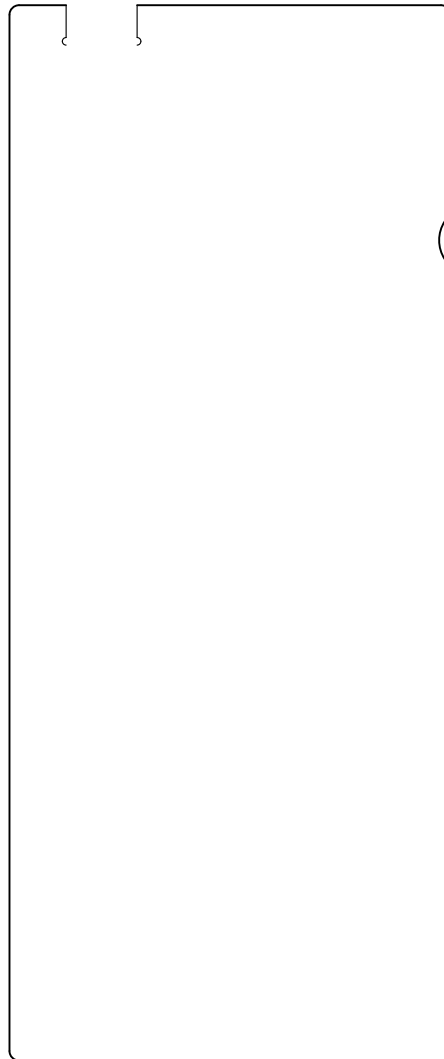




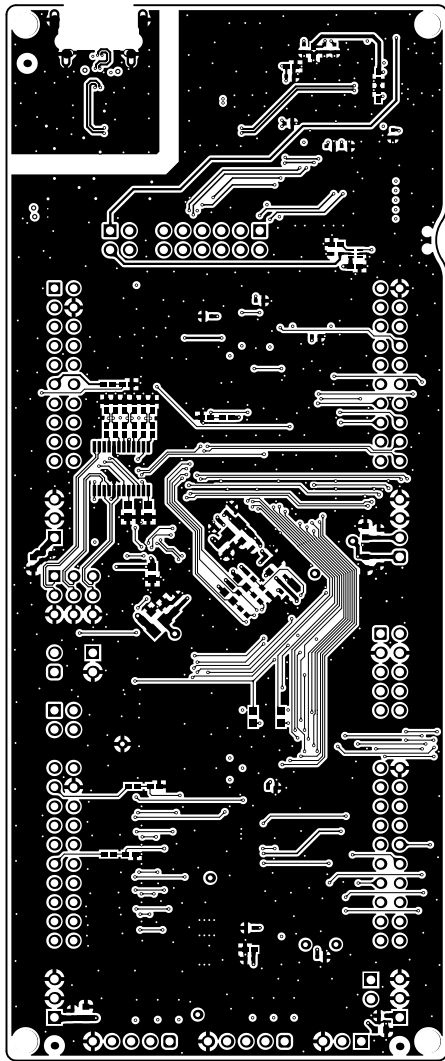
MGNBoard Outline



PWR

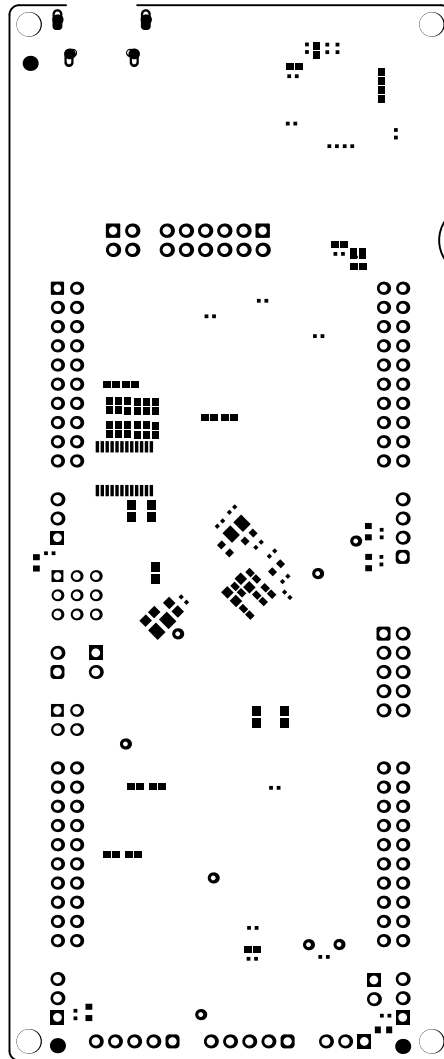


M1 Board Outline

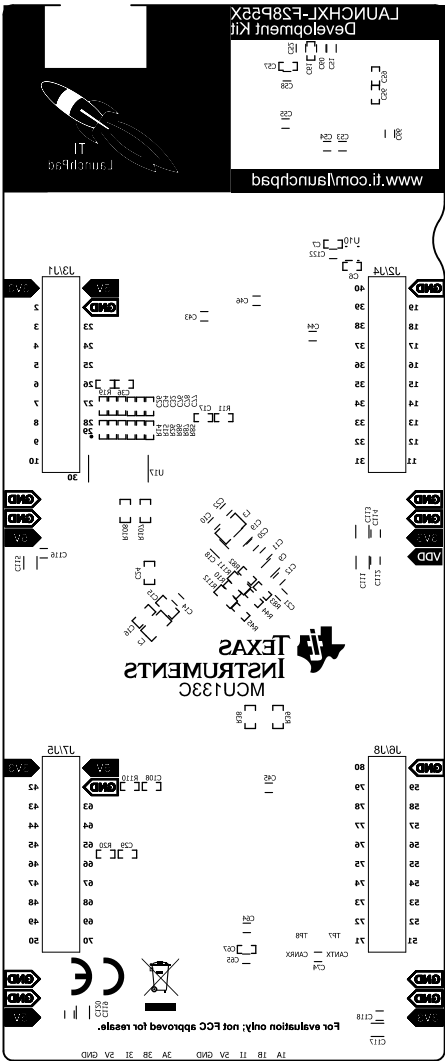


Bottom Signal

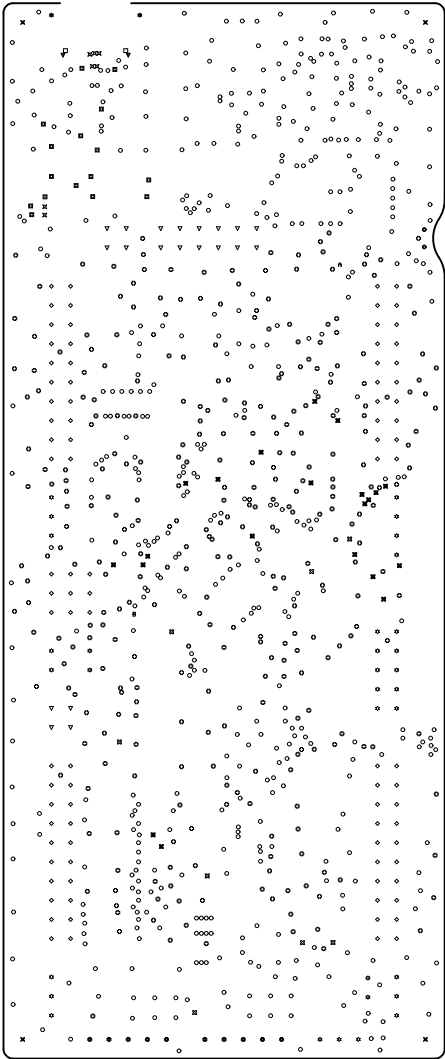




Bottom Solder



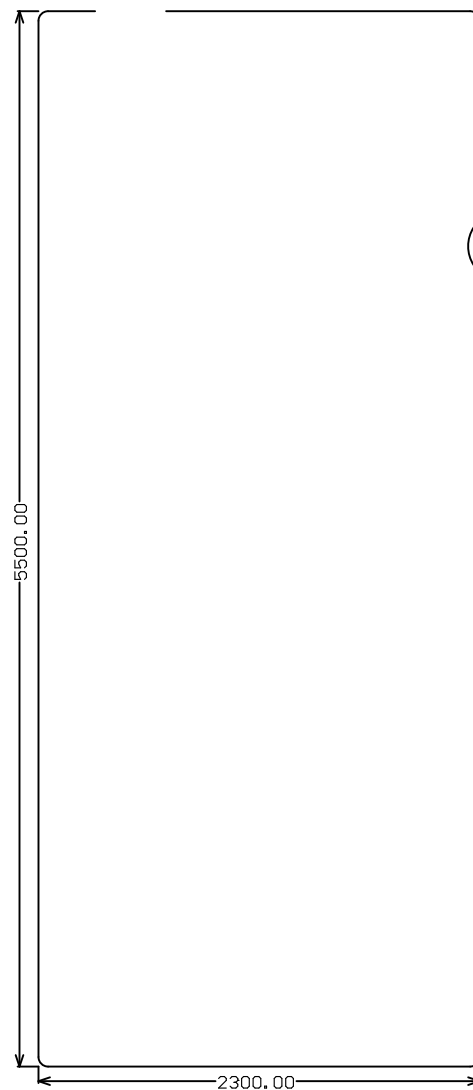
Bottom Overlay



Drill Drawing

Symbol	Quantity	Finished Hole Size	Plated	Hole Type	Drill Layer Pair	Hole Tolerance
⊙	2	35.43mil (0.900mm)	NPTH	Round	Top Signal - Bottom Signal	+0.00mil
⊗	4	125.00mil (3.175mm)	NPTH	Round	Top Signal - Bottom Signal	
⊗	7	7.87mil (0.200mm)	PTH	Round	Top Signal - Bottom Signal	
⊙	325	9.84mil (0.250mm)	PTH	Round	Top Signal - Bottom Signal	
⊙	497	9.84mil (0.250mm)	PTH	Round	Top Signal - Bottom Signal	+0.00mil
⊗	21	11.81mil (0.300mm)	PTH	Round	Top Signal - Bottom Signal	
⊙	1	11.81mil (0.300mm)	PTH	Round	Top Signal - Bottom Signal	
⊗	1	15.75mil (0.400mm)	PTH	Round	Top Signal - Bottom Signal	
⊙	16	15.75mil (0.400mm)	PTH	Round	Top Signal - Bottom Signal	+/-1.97mil
⊗	8	25.00mil (0.635mm)	PTH	Round	Top Signal - Bottom Signal	
⊙	89	40.16mil (1.020mm)	PTH	Round	Top Signal - Bottom Signal	
⊗	10	43.31mil (1.100mm)	PTH	Round	Top Signal - Bottom Signal	
▽	20	43.31mil (1.100mm)	PTH	Round	Top Signal - Bottom Signal	
⊙	32	45.28mil (1.150mm)	PTH	Round	Top Signal - Bottom Signal	
⊙	2	27.56mil (0.700mm)	PTH	Slot	Top Signal - Bottom Signal	
⊗	2	59.06mil (1.500mm)	PTH	Slot	Top Signal - Bottom Signal	
▽	2	74.80mil (1.900mm)	PTH	Slot	Top Signal - Bottom Signal	
1039 Total						

Slot definitions : Routed Path Length = Calculated from tool start centre position to tool end centre position.  
Hole Length = Routed Path Length + Tool Size = Slot length as defined in the PCB layout



M2 Board Dimensions